

Chrome bathroom concept



RAVAK[®]

200 DIFFERENT PRODUCTS IN UNIFORM DESIGN



SMART HARMONISED ELEGANT COMPREHENSIVE



Shower enclosures



Shower trays



Drains



Seats



Bathtubs



Bathtub screens



Washbasins



Furniture



WC



Bidet



Water taps

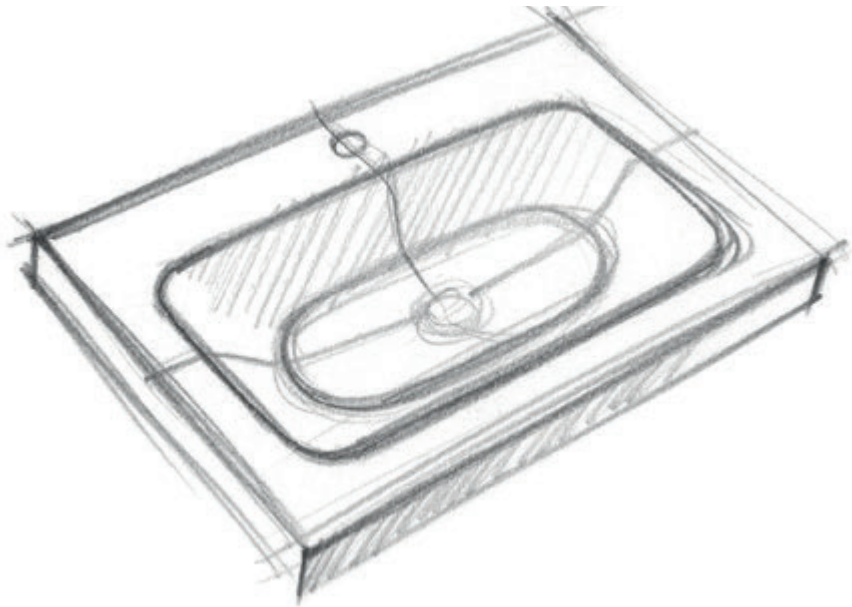


Accessories

WHY CHOOSE A RAVAK CONCEPT?

Design

1 Because it's difficult to make a perfectly design-harmonized bathroom.
And now we offer you perfect solution.



2 Enables your client to invest fully in their bathroom purchase at one time and place. This includes all accessories which may have been purchased elsewhere.

All products on same price level. A clearer understanding of costs can promote an ease of purchase.

Sales & Profits

Why choose
a RAVAK concept?



Distinction

3 Our strength lies not only in the individual products but in the complete bathroom solution. This is what makes our concept unique on the market.

4 200 products from one supplier saves your effort and time.

**Time.
saving**



TIMELESS DESIGN



Adjustable shower enclosure
bracket and reversible handle.

KRYŠTOF NOSÁL, designer
of the Concept Chrome.



Chrome series overview

Bathtubs and bathtub screens



Acrylic bathtub
170 x 75 cm
160 / 150 x 70 cm



CVS2
Bifold
bathtub screen
150 x 99 cm

Shower enclosures and trays



CSKK4



CSD1



CSD2



CRV2 + CPS



Elipso Pro Chrome
80 / 90 cm



Perseus Pro Chrome
80 / 90 / 100 cm



Gigant Pro Chrome
100 x 80 / 110 x 80 cm
120 x 80 / 120 x 90 cm

Seats



OVO Chrome seats

Washbasins and furniture



Ceramics washbasin
with cabinet
55 / 65 cm



Mirror
60 / 70 / 80 cm



Washbasin
with cabinet
60 / 70 / 80 cm



Side column
cabinet
35 cm; L/R



Double wasbasin
with cabinet
120 cm



Small washbasin
with cabinet
40 cm; L/R

WC and bidet



WC Uni Chrome
36 x 51 x 35 cm



Bidet Uni Chrome
36 x 51 x 29 cm



Universal control
push button
white / satin

Water taps and bathroom accessories



Washbasin
water tap



Double hook



Wall-mounted
bathtub water tap



Soap dispenser



Kitchen sink
standing water tap



Toilet brush
holder



Built-in
water tap



Built-in thermostatic
water tap

MAIN SALES ARGUMENTS



1 **Impressive
timeless design**

Main product arguments

- 2** High quality bathtub with 10-year warranty
Unique shower screen compliments the wash basin depth.



- 3** Durable surfaces of shower enclosures (Satin and Anticalc®)



- 4** Absolute straight edge design several shelves available



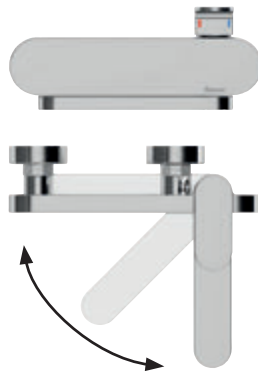
- 5** A lot of storage space
Quality moisture impregnation



- 6** Comfortable folding seat with guaranteed carry capacity up to 150kg



- 7** Water tap with hinged arm



- 8** Designed drains



- 9** Practical accessories



RAVAK

WORLDWIDE



More than:

10.000.000 satisfied customers

10.000 shops

50 countries around the world

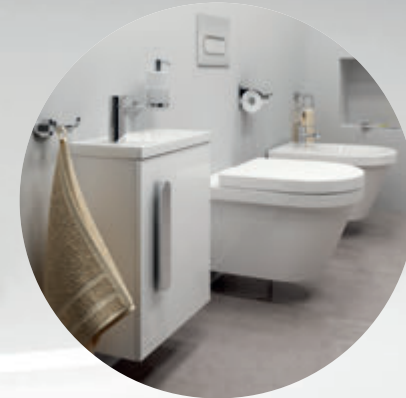
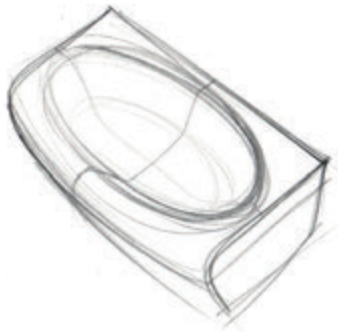
REFERENCES

Clients around the world enjoy the benefits of a RAVAK bathroom solution.

Like water, our products aren't limited by borders. That's why you can find them in more than fifty countries worldwide, placed in some of the finest hotels, companies and private homes. Everywhere, our customers appreciate our brand, its quality and original design.



DESIGNERS



Kryštof Nosál

Founder of the Nosal Design studio.

A top Czech product designer. His motto is to provide a simple, yet functional solution with a clear idea. Formerly designer for Narex and other international companies, he has crafted many of the most popular RAVAK bathroom products. He is a regular nominee of the prestigious design competitions.



reddot design award
winner 2015



DESIGNERS



Achim Storz

Founder of the Design Storz studio.

When designing our baths, studio Storz draws on the tradition of automotive interiors designed for Porsche, BMW and Audi, as well as consumer goods, such as Adidas, Hugo Boss and Colgate. Achim Storz provides our products with the author's genuine imprint and precise solutions.

RAVAK TECHNOLOGY



Pressworking of acrylic moulding for future bathtub – vertical heating technology.



Acrylic moulding RAVAK

All surface finishes are done in our electroplating and paint lines.



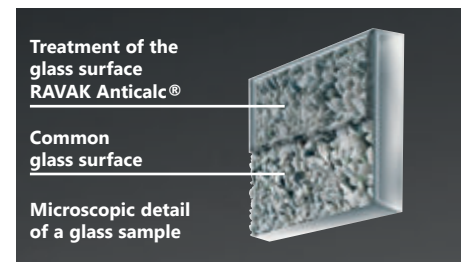
Electroplating RAVAK

An environmentally friendly electrostatic powder painting on aluminium shower enclosure frames.



Paint line RAVAK

A revolutionary technology creates an invisible protective layer over the surface of the water-repelling glass.



RAVAK AntiCalc®

RAVAK MATERIALS

A mixture of ground dolomite and resin is used to produce wash basins and shower trays.



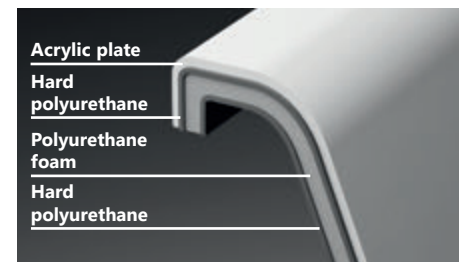
Cast Marble

Highly effective reinforcement of acrylic products with polyester resin and glass fibre.



Fibreglass

Exclusive technology for reinforced acrylic baths with polyurethane foam, patented by RAVAK.



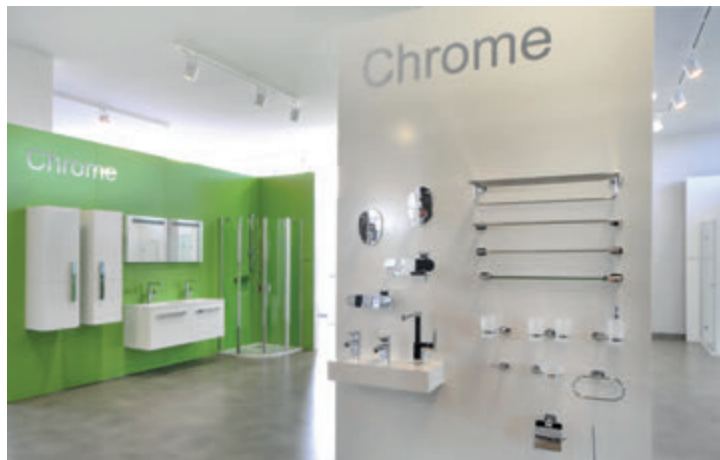
PU Plus

Bathroom furniture is made of quality AMT Chipboard (Anti-moisture treated), accompanied with high-quality moisture impregnation.



AMT Chipboard

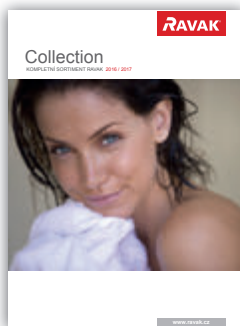
MERCHANDISING



We design displays.
We organize quality training
sessions.

Example of a good display
of RAVAK products.

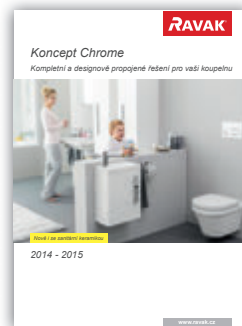
PRODUCT SUPPORT



Catalogues



Specialised catalogues



Posters



RAVAK a.s.
Obecnická 285, 261 01 Příbram 1
Czech Republic
tel.: +420 318 427 111, +420 318 427 200
fax: +420 318 427 269, +420 318 427 278
info@ravak.cz
www.ravak.com
www.ravak.cz

The logo consists of the word "RAVAK" in a bold, white, sans-serif font, with a registered trademark symbol (®) to the upper right of the letter "K". The text is set against a solid red rectangular background.